

THE FOLLOWING **PREVIEW** HAS BEEN APPROVED FOR  
**ALL AUDIENCES**

BY **Paradigm**<sup>®</sup>  
**THE #1 SPEAKER BRAND\***

THESE CINEMA SPEAKERS HAVE BEEN RATED



FOR MORE INFO, GO TO THE NEXT CLIP ...

\* # 1 Best Price/Value by the *Inside Track* Annual Dealer Survey. An annual independent nationwide survey of consumer electronics specialist retailers and custom installers.

# Cinema Speakers Deliver Red Carpet Performance!



Cinema CT Systems in home theaters summer 2011



**Cinema 100 CT:** 5 x Cinema 100 satellites • 1 x Cinema Sub

## Teaser Trailer

### Special Effects

- S-PAL™ satin-anodized pure-aluminum domes
- Wire-mesh tweeter guard; WaveGuide™ technology
- Mineral-filled polypropylene cones
- Additional mineral content stiffens cone composition
- Reference-quality crossovers
- Push-thru binding posts with Easy-Glide™ channels
- Deep articulate bass via the new Cinema Sub

### Visual Effects

- New curved profile with industrial high-gloss finish
- Sculpted acoustic-suspension cabinets
- Streamlined stands for bookshelf models (*included*)
- On-wall models feature EasyMount™ system
- Removable self-aligning StayTight™ magnetic grilles

Now in Wide Release

# Cinema Sub

300 watts Dynamic Peak Power / 100 watts RMS Sustained



PRODUCT CONSUMES LESS THAN 0.5 WATTS IN STANDBY

Shown:  
Cloth side up with  
feet attached

**Deeper and louder bass than the Cinema satellites can provide with dramatic dynamic range**

- 8" high-excursion driver made of a durable reinforced polymer composite that allows the bass cone to travel farther but with effective control during that extended travel
- Dual-ported design for more even and articulate bass response
- Two aesthetic placement options: Gloss Side Up or Cloth Side Up
- 4 feet are included to prevent floor vibrations and resonances from coloring sound during moments of extreme output

Cinema Sub is included with a Cinema CT system, otherwise it is sold separately.



Controls:

- Auto On / Standby / Soft Clipping
- Subwoofer Cut-Off Frequency
- Sub / Sat Phase Alignment Switch

Inputs:

Two inputs both are Line-Level

# Breakout Performance by ...

Best performance for drivers in a shared role! That of supplying a blockbuster music and home theater experience ▼



The Tweeter



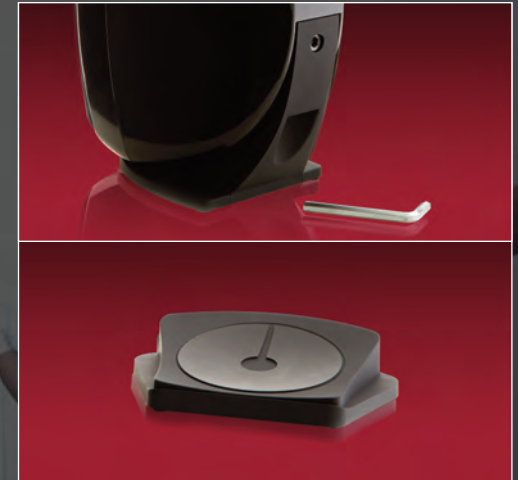
The Bass/Midrange Driver

## Mounting Systems



### Cinema on-wall models feature Paradigm's EasyMount™ system

- Extremely thin bracket takes up very little space on the wall
- Mounting process is simple



### Table-top stands included with Cinema 100

- 3-pc. system includes vertical stands and a horizontal stand for the center configuration
- 2-pc. system includes vertical stands

### 1 Center stand with Cinema 200, Cinema 400 and Cinema Trio (not shown)

- Included with each speaker for use in the horizontal configuration

# Cameo Appearances . . .

Create a Home Theater System to meet your customers' needs: budget, style and space! ▼



### Cinema 200 System: An 'any flat-panel' complement

- 3 x Cinema 200
- 2 x Cinema 100
- 1 x Cinema Sub



### Cinema 400 System: Ideal for larger flat panel systems.

- 3 x Cinema 400
- 2 x Cinema 100
- 1 x Cinema Sub



### Cinema Trio System: For those who love a soundbar look!

- 1 x Cinema Trio
- 2 x Cinema 100
- 1 x Cinema Sub

## Applause for a Standout Supporting Cast



### MC-30 Stand

- For Cinema 100 only
  - Aluminum post and polymer base with cast-iron weight
  - Customized polymer bracket head
  - 30" high
  - Black
- (Sold separately)



### Monitor Surround 1 and Monitor Surround 3

## ALL-STAR CAST & technical credits

### Cinema 100

**DESIGN:** 2-driver, 2-way acoustic suspension, stand-mounted/wall-mounted

**CROSSOVER:** 2nd-order electro-acoustic at 1.8 kHz

**HIGH-FREQUENCY DRIVER:** 25-mm (1 in) S-PAL™ satin-anodized pure-aluminum dome, ferro-fluid damped and cooled

**BASS/MIDRANGE DRIVER:** 102-mm (4 in) mineral-filled polypropylene cone, 25-mm (1 in) high-temperature voice coil, advanced motor structures and oversized ferrite magnets

**LOW-FREQUENCY EXTENSION:** 85 Hz (DIN)

**FREQUENCY RESPONSE:** *On-axis:* ±2 dB from 125 Hz – 20 kHz;  
*30° off-axis:* ±2 dB from 125 Hz – 15 kHz

**SENSITIVITY – ROOM / ANECHOIC:** 88 dB / 85 dB

**SUITABLE AMPLIFIER POWER RANGE:** 15 – 100 watts

**MAXIMUM INPUT POWER†:** 50 watts

**IMPEDANCE:** Compatible with 8 ohms

**DIMENSIONS (h x w x d):** 21.2 cm x 12.2 cm x 15.7 cm;  
8-3/8 in x 4-13/16 in x 6-13/16 in

**WEIGHT (unpacked):** 1.8 kg / 4.0 lb per speaker (with stand)

### Cinema 200

**DESIGN:** 3-driver, 2-way acoustic suspension LCR on-wall with option to sit center speaker on a table or shelf with supports included

**CROSSOVER:** 2nd-order electro-acoustic at 1.8 kHz

**HIGH-FREQUENCY DRIVER:** 25-mm (1 in) S-PAL™ satin-anodized pure-aluminum dome, ferro-fluid damped and cooled

**BASS/MIDRANGE DRIVER:** Two 102-mm (4 in) mineral-filled polypropylene cones, 25-mm (1 in) high-temperature voice coils, advanced motor structures with oversized ferrite magnets

**LOW-FREQUENCY EXTENSION:** 80 Hz (DIN)

**FREQUENCY RESPONSE:** *On-axis:* ±2 dB from 120 Hz – 20 kHz;  
*30° off-axis:* ±2 dB from 120 Hz – 15 kHz

**SENSITIVITY – ROOM / ANECHOIC:** 90 dB / 87 dB

**SUITABLE AMPLIFIER POWER RANGE:** 15 – 150 watts

**MAXIMUM INPUT POWER†:** 70 watts

**IMPEDANCE:** Compatible with 8 ohms

**DIMENSIONS (h x w x d):** 50.5 cm x 16.1 cm x 10.4 cm;  
19-7/8 in x 6-5/16 in x 4-1/16 in

**WEIGHT (unpacked):** 3.7 kg / 8.3 lb per speaker

### Cinema 400

**DESIGN:** 5-driver, 2-1/2-way acoustic suspension LCR on-wall with option to sit center speaker on a table or shelf with supports included

**CROSSOVER:** 2nd-order electro-acoustic at 2.1 kHz;  
2nd-order electro-acoustic at 500 Hz (bass drivers)

**HIGH-FREQUENCY DRIVER:** 25-mm (1 in) S-PAL™ satin-anodized pure-aluminum dome, ferro-fluid damped and cooled

**BASS/MIDRANGE DRIVER:** 102-mm (4 in) mineral-filled polypropylene cone, 25-mm (1 in) high-temperature voice coil, advanced motor structures with oversized ferrite magnets

**BASS DRIVER:** Two 102-mm (4 in) mineral-filled polypropylene cones, 25-mm (1 in) high-temperature voice coils, advanced motor structures and oversized ferrite magnets

**LOW-FREQUENCY EXTENSION:** 75 Hz (DIN)

**FREQUENCY RESPONSE:** *On-axis:* ±2 dB from 115 Hz – 20 kHz;  
*30° off-axis:* ±2 dB from 115 Hz – 15 kHz

**SENSITIVITY – ROOM / ANECHOIC:** 95 dB / 92 dB

**SUITABLE AMPLIFIER POWER RANGE:** 15 – 200 watts

**MAXIMUM INPUT POWER†:** 100 watts

**IMPEDANCE:** Compatible with 8 ohms

**DIMENSIONS (h x w x d):** 67.0 cm x 16.1 cm x 10.4 cm;  
26-3/8 in x 6-5/16 in x 4-1/16 in

**WEIGHT (unpacked):** 5.8 kg / 12.8 lb per speaker (with stand)

### Cinema Trio

**DESIGN:** On-wall left speaker & right speaker & center speaker; 7-driver, 3-channel, 2-way acoustic suspension; option to sit speaker on table or shelf with supports included

**CROSSOVER:** 2nd-order electro-acoustic at 1.8 kHz

**HIGH-FREQUENCY DRIVER:** 25-mm (1 in) S-PAL™ satin-anodized pure-aluminum dome, ferro-fluid damped and cooled

**BASS/MIDRANGE DRIVER:** Four 102-mm (4 in) mineral-filled polypropylene cones, 25-mm (1 in) high-temperature voice coil, advanced motor structures with oversized ferrite magnets

**LOW-FREQUENCY EXTENSION:** 85 Hz (DIN)

**FREQUENCY RESPONSE:** *On-axis:* ±2 dB from 125 Hz – 20 kHz;  
*30° off-axis:* ±2 dB from 125 Hz – 15 kHz

**SENSITIVITY – ROOM / ANECHOIC:** 89 dB / 86 dB

**SUITABLE AMPLIFIER POWER RANGE:** 15 – 200 watts

**MAXIMUM INPUT POWER†:** 70 watts

**IMPEDANCE:** Compatible with 8 ohms

**DIMENSIONS (h x w x d):** 16.1 cm x 91.5 cm x 10.4 cm,  
6-5/16 in x 36 in x 4-1/16 in

**WEIGHT (unpacked):** 7.6 kg / 16.8 lb



★ Shown: Cinema 400's



Cinema 100

Cinema 200

Cinema 400



Cinema Trio



Cinema Sub

### Cinema Sub

**DESIGN:** Single driver, bass reflex, high-velocity low-turbulence resistive ports, built-in amplifier, flexible positioning: gloss side up or cloth side up with feet  
**AMPLIFIER: HIGH-CURRENT DISCRETE OUTPUT:** 300 watts Dynamic Peak  
 100 watts RMS Sustained

**AMPLIFIER FEATURES:** Auto-on; standby; soft clipping

**BASS DRIVER:** 210-mm (8 in) high-excursion reinforced co-polymer polypropylene composite cone, 38-mm (1-1/2 in) voice coil

**LOW-FREQUENCY EXTENSION\*:** 32 Hz (DIN)

**SUBWOOFER CUT-OFF FREQUENCY:** Variable 35 Hz – 150 Hz; bypass option

**SUB / SAT PHASE SWITCH:** Variable 0° or 180°

**LINE-LEVEL INPUT:** Two RCA (L/R-Mono) for L/R lineout or Sub-Out/LFE-Out of receiver/processor or other line-level source

**LINE-LEVEL INPUT IMPEDANCE:** 10k ohms

**HEIGHT, WIDTH, DEPTH** (gloss side up, height is with feet):  
 34.2 cm x 32.2 cm x 32.2 cm; 13-7/16 in x 12-11/16 in x 12-11/16 in

**WEIGHT (unpacked):** 9.7 kg / 21.4 lb



PRODUCT CONSUMES LESS  
 THAN 0.5 WATTS IN STANDBY

\*DIN 45 500 Indicates -3 dB in a typical listening room.

\*With typical program source providing the amplifiers clips no more than 10% of the time.

# Paradigm®

Copyright © Paradigm Electronics Inc. All rights reserved. Paradigm reserves the right to change specifications and/or features without notice as design improvements are incorporated



www.paradigm.com